

A nighttime photograph of a city skyline with several illuminated skyscrapers. The buildings are lit up with warm yellow and white lights, and some have blue accents. The sky is dark, and the overall scene is vibrant and modern.

University of **HOUSTON**
CENTER FOR ADVANCED COMPUTING
& DATA SCIENCE

invites the LUG community to

LUG19

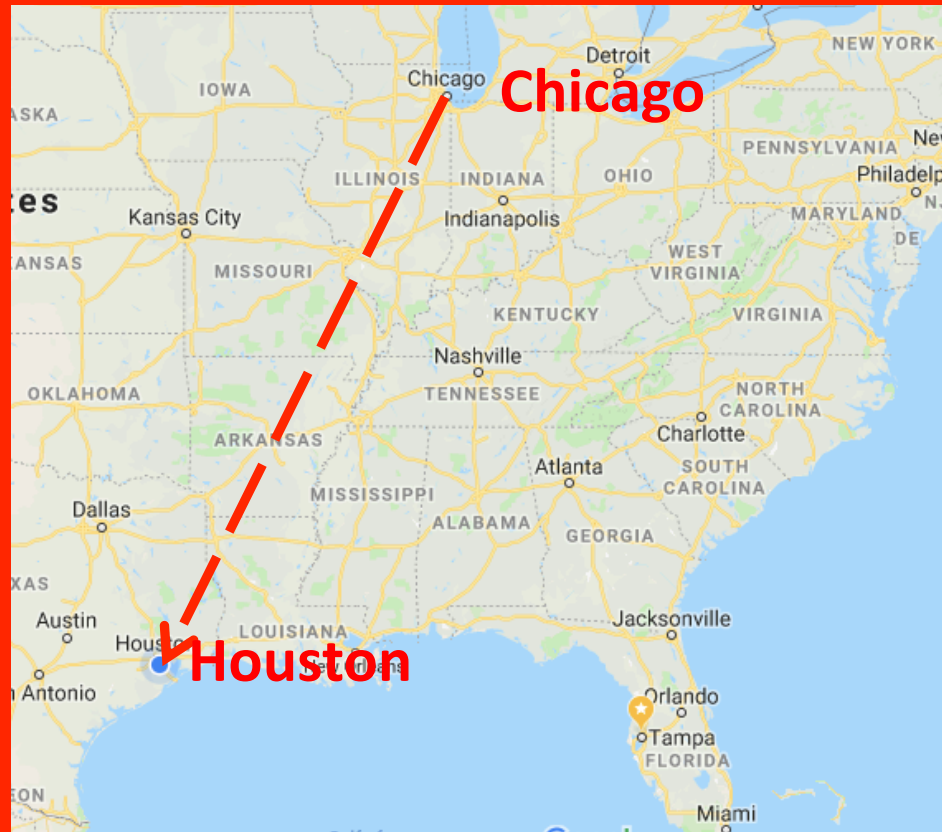
Houston TX

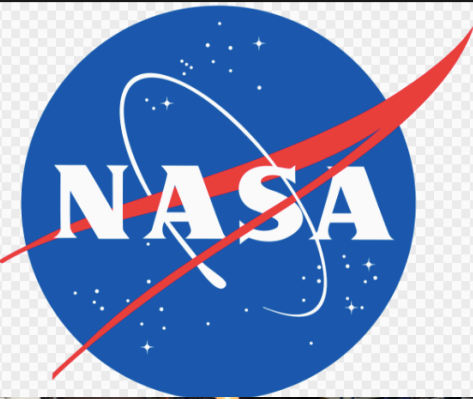
May 14-17 2019

May 14: Developers & Hackathon

May 15-17 am: LUG19 Meeting

May 17 pm: NASA Tour (optional)





SPACE CENTER HOUSTON

Open today 9 a.m. - 5 p.m.
View seasonal hours

BUY TICKETS >

ATTRACTIONS

AGES ▾ TYPE ▾ TIME ▾

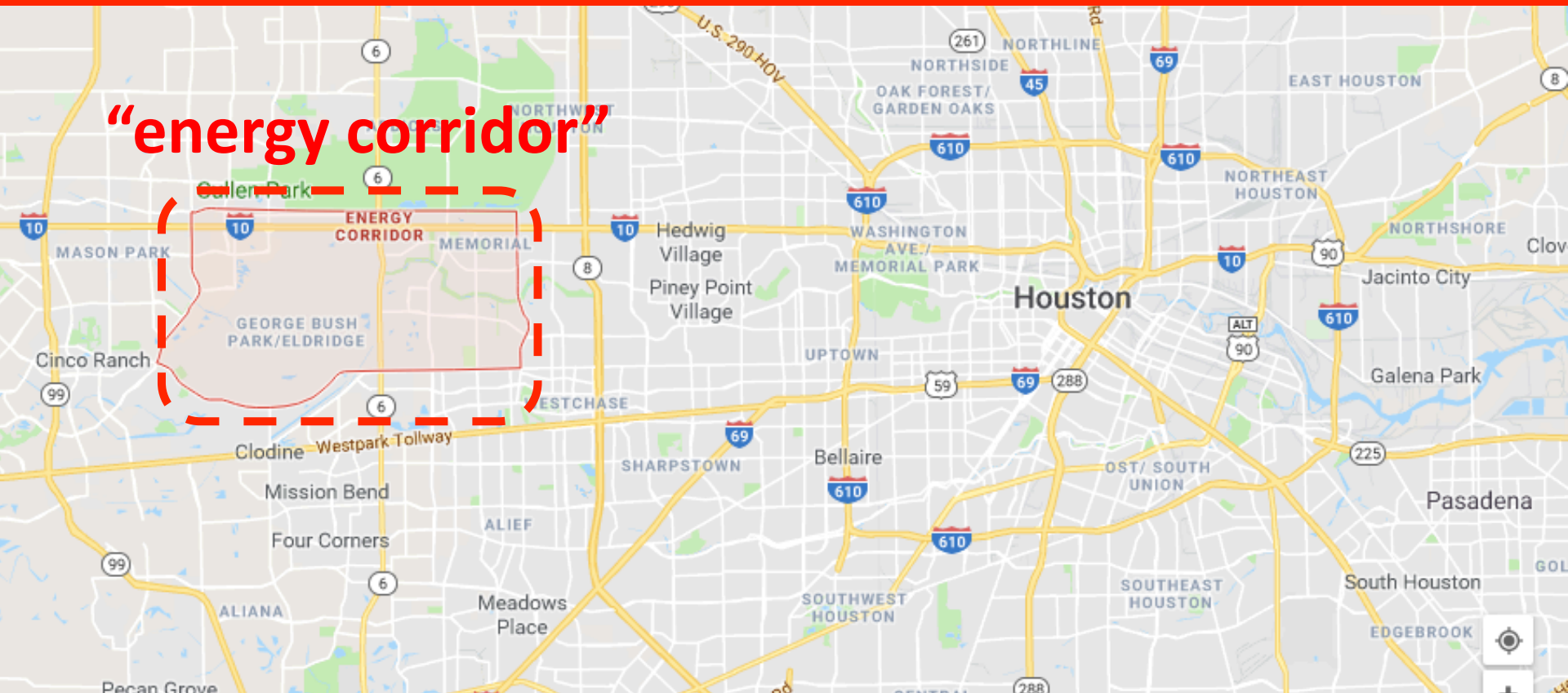
A photograph of the interior of a space shuttle, showing a person in a white suit standing in a narrow corridor.

HOUSTON

Quick Facts

- ◆ 4th largest US city
- ◆ Population > 4,000,000
 - 37% Anglo, 37% Hispanic, 17% African American
- ◆ 150 different languages
- ◆ Foodie Mecca (*Insider Magazine*)
- ◆ Among 7 most impressive US city (*Thrillist*)
- ◆ Among 10 coolest cities for Millennials (*Upscale Magazine*)
- ◆ 1st in total park acreage among large US cities
- ◆ Largest medical center in the world
- ◆ 400 bird species
- ◆ Two international airports

- “Energy capital of the world”: 5000 energy firms
- 2nd largest concentration of Fortune 1000 companies



TMC

TEXAS
MEDICAL
CENTER

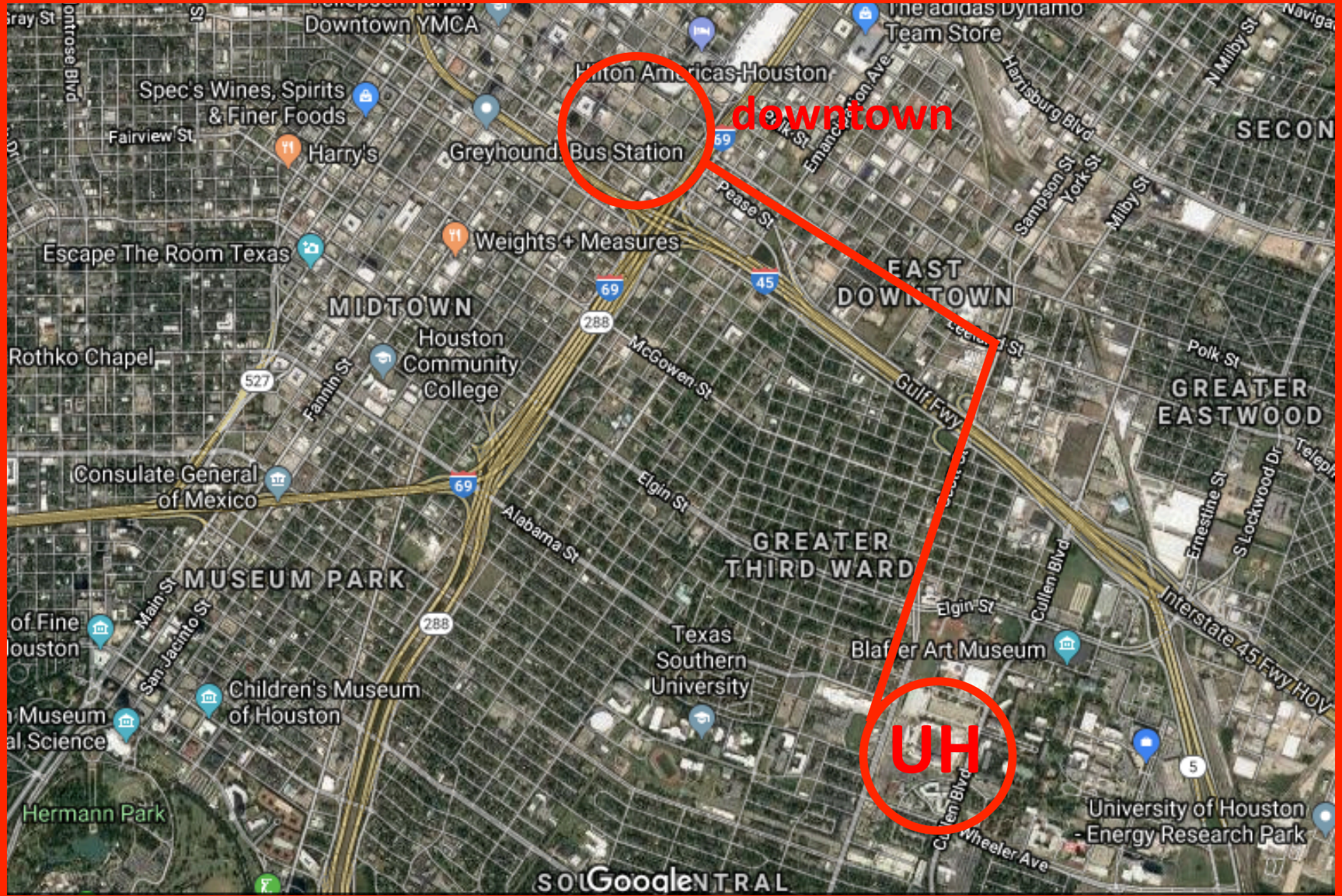
the largest medical complex in the world-

downtown



One hotel on campus

Downtown hotels by Metrorail



UNIVERSITY of **HOUSTON**
CENTER FOR ADVANCED COMPUTING
& DATA SCIENCE

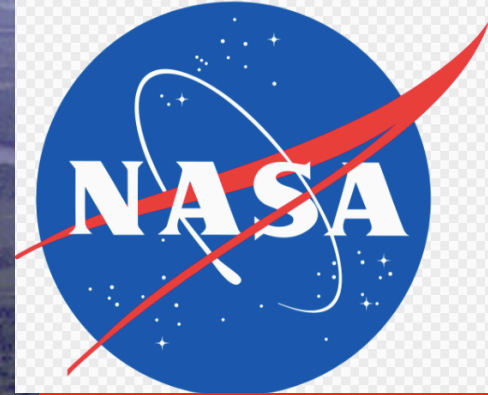
invite the LUG community to
LUG19

Houston TX
May 14-17 2019

LUG19



University of **HOUSTON**
Center for Advanced Computing & DS



HOUSTON

Quick Facts

4th largest US city

Population > 4,000,000

37% Anglo, 37% Hispanic, 17% African American

150 different languages

“Energy capital of the world”: 5000 energy firms

Foodie Mecca (*Insider Magazine*)

Among 7 most impressive US city (*Thrillist*)

Among 10 coolest cities for Millennials (*Upscale Magazine*)

1st in total park acreage among large US cities

Largest medical center in the world

400 bird species

Two international airports

HOUSTON

Quick Facts

- ◆ 4th largest US city
- ◆ Population > 4,000,000
- ◆ 37% Anglo, 37% Hispanic, 17% African American
- ◆ 150 different languages
- ◆ Foodie Mecca (Insider Magazine)
- ◆ Among 7 most impressive US city (Thrillist)
- ◆ 10th coolest city for Millennials to love (Upscale Magazine)
- ◆ 1st in total park acreage among large US cities
- ◆ Largest medical center in the world
- ◆ 400 bird species
- ◆ Two international airports

University of HOUSTON

LUG19



University of HOUSTON

LUG19



Center for Advanced Computing & DS

FOR ADVANCED CO & DATA SCIENCE



The background of the slide is a dark red color. In the center, the letters 'DSI' are written in a large, bold, white sans-serif font. Below the 'DSI' text, there are two thin white horizontal lines. The background also features faint, semi-transparent elements: a network diagram with nodes and lines on the left side, and snippets of code in a light red font on the right side. The code includes lines like 'mirror mod.use_x = False', 'mod.use_y = False', 'for mod in ... = True', 'on the end -add back the deselected mirror mo', 'mirror mod', 'mod.sel', 'bpy.context.scene.objects.active = modifier_ob', and 'print("Selected" + str(modifier_ob)) # modifier ob is the act'.

DSI

Data Science Institute

UNIVERSITY of **HOUSTON**

The image features a central logo for the Data Science Institute (DSI). The letters 'DSI' are rendered in a large, bold, white sans-serif font. Below them, the words 'Data Science Institute' are written in a smaller, white sans-serif font. The entire logo is centered within a horizontal red band. The background of the image is a stylized city skyline at night, with various skyscrapers and buildings. The sky is a gradient of light blue and purple. Overlaid on the city are several thin, white, curved lines that suggest data connections or network paths. The overall aesthetic is modern and tech-oriented.

DSI

Data Science Institute

UNIVERSITY of **HOUSTON**