



Annual Members Meeting

June 2017

“Stuff” We’ll Be Covering Today

- OpenSFS past and future
- Membership
- Financials
- Requirements gathering process
- Board elections/new leadership

It's Been a Long Road...



But We Made It!

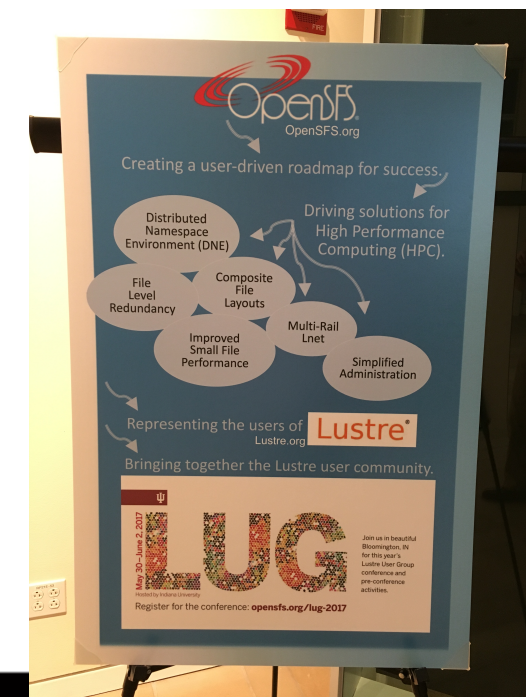


OpenSFS is now an organization with:

- an elected leadership
- a unified voice
- a user run Lustre User Group meeting
- Provides support for the Lustre Working Group
- Provides support for lustre.org along with EOFS
- Provides forum for frank and direct contact between vendors and users

Key Highlights of 2016/2017

- Lustre Community BOF - Lustre Deployments for the Next 5 Years (SC'16)
- Rice Oil and Gas Presentation
- 1st member hosted LUG
- Lustre 2.8 & 2.9 releases
- Completion of the long running Lustre development contracts
- Community elected Board of Directors



OpenSFS Membership

Membership has been flattened and dues significantly reduced

Join Us!

Members (user organizations):

- Voting rights
- Eligibility to serve on the board
- Eligibility to serve on LUG planning committee
- Eligibility to participate in requirements gathering

\$1,000 annual dues

Participants (vendor organizations):

- Support community efforts to promote Lustre
- Opportunities for direct contact with User community
- Access to community requirements gathering exercise
- Eligible to attend OpenSFS member meetings

\$5,000 annual dues

OpenSFS Members

Members

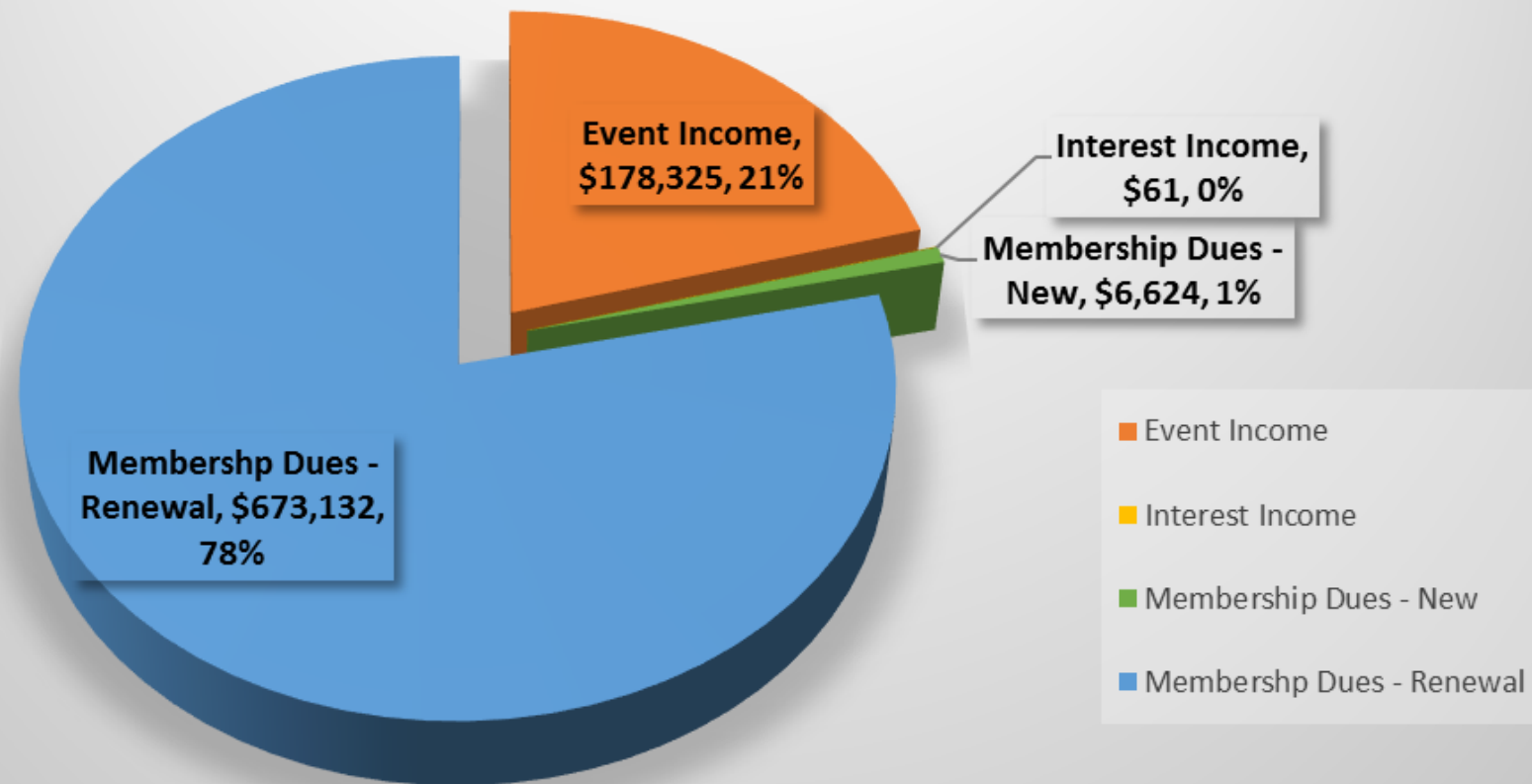


Participants

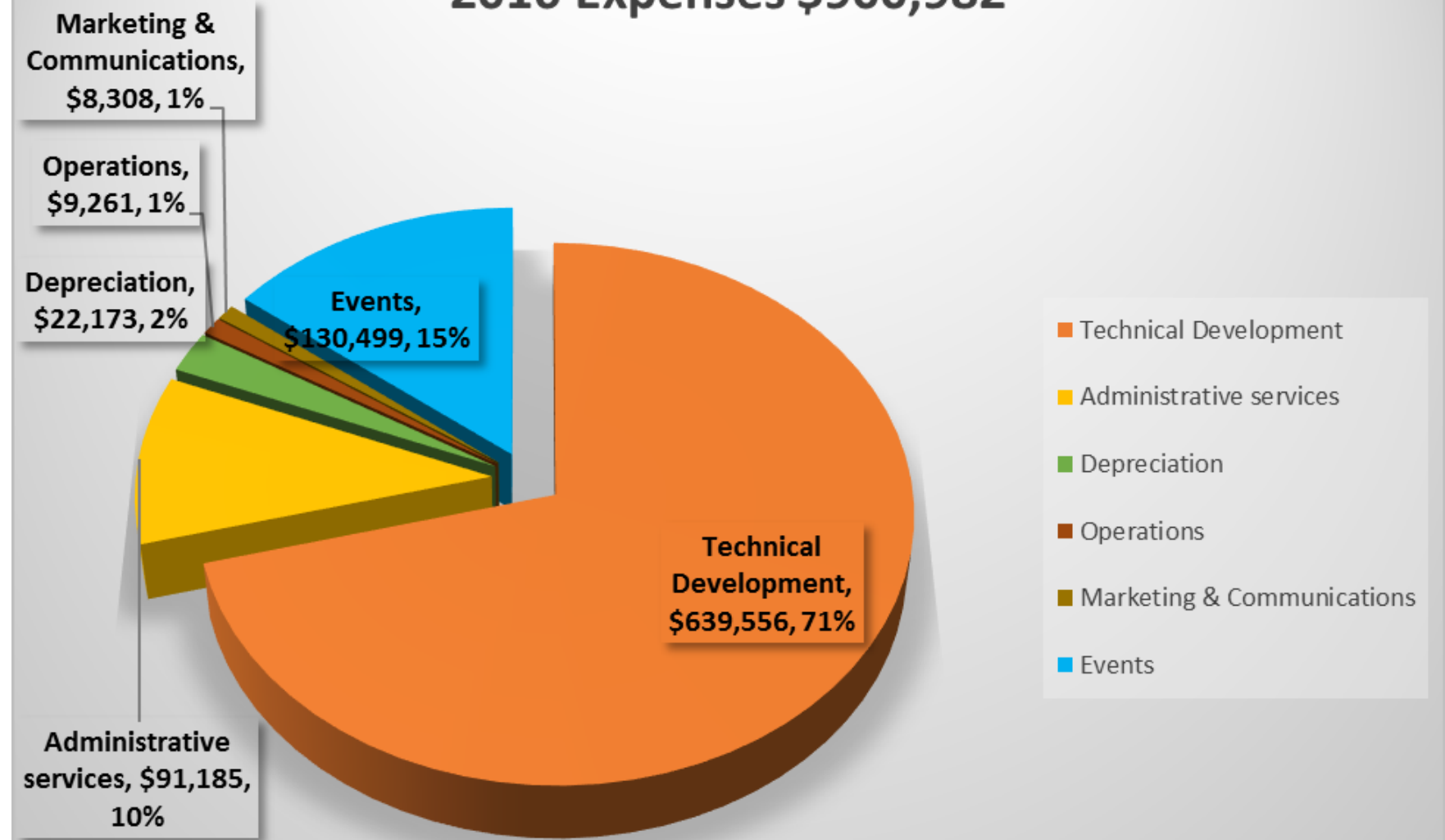


2016 Financials

2016 Revenue \$858,143

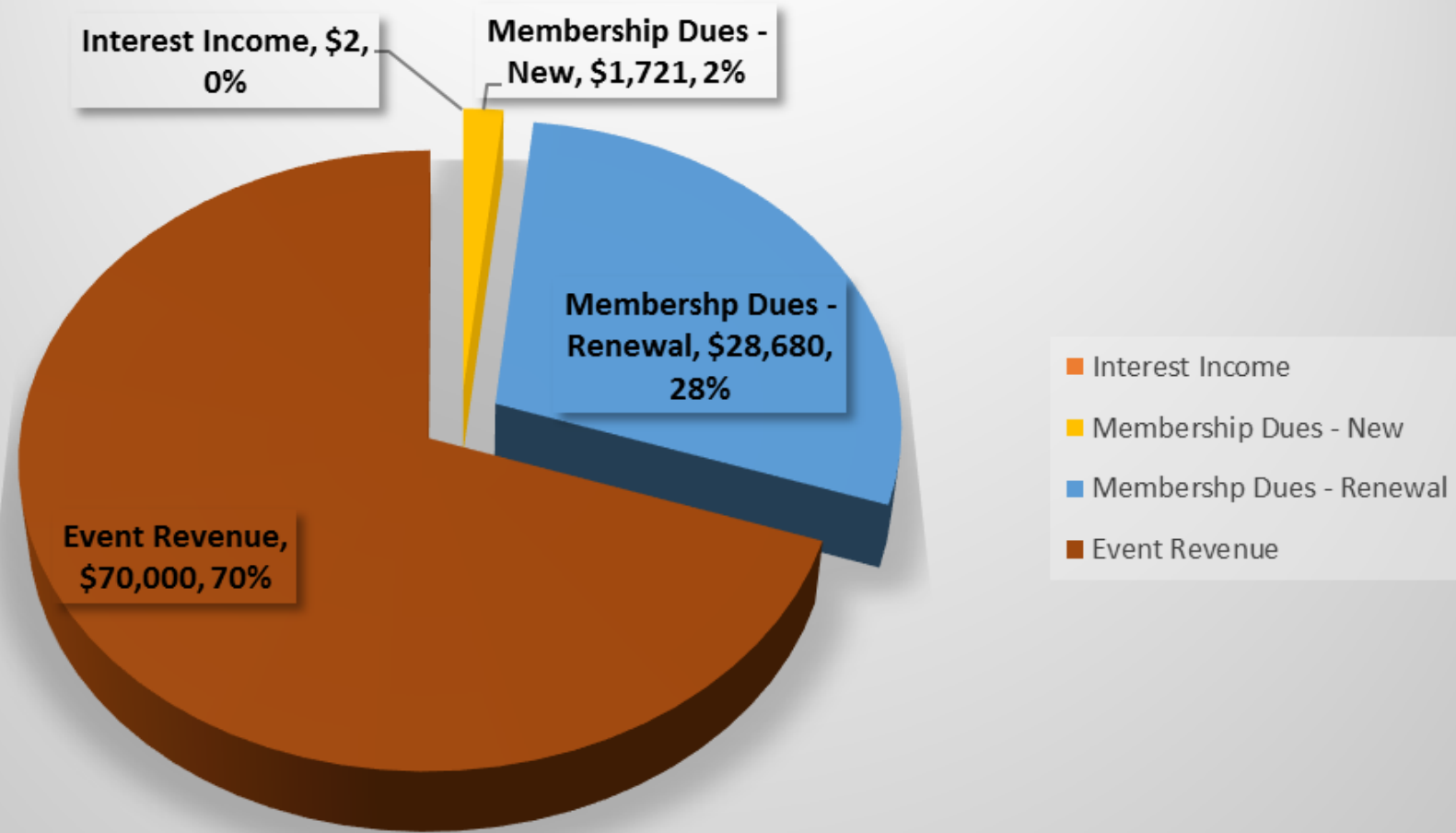


2016 Expenses \$900,982

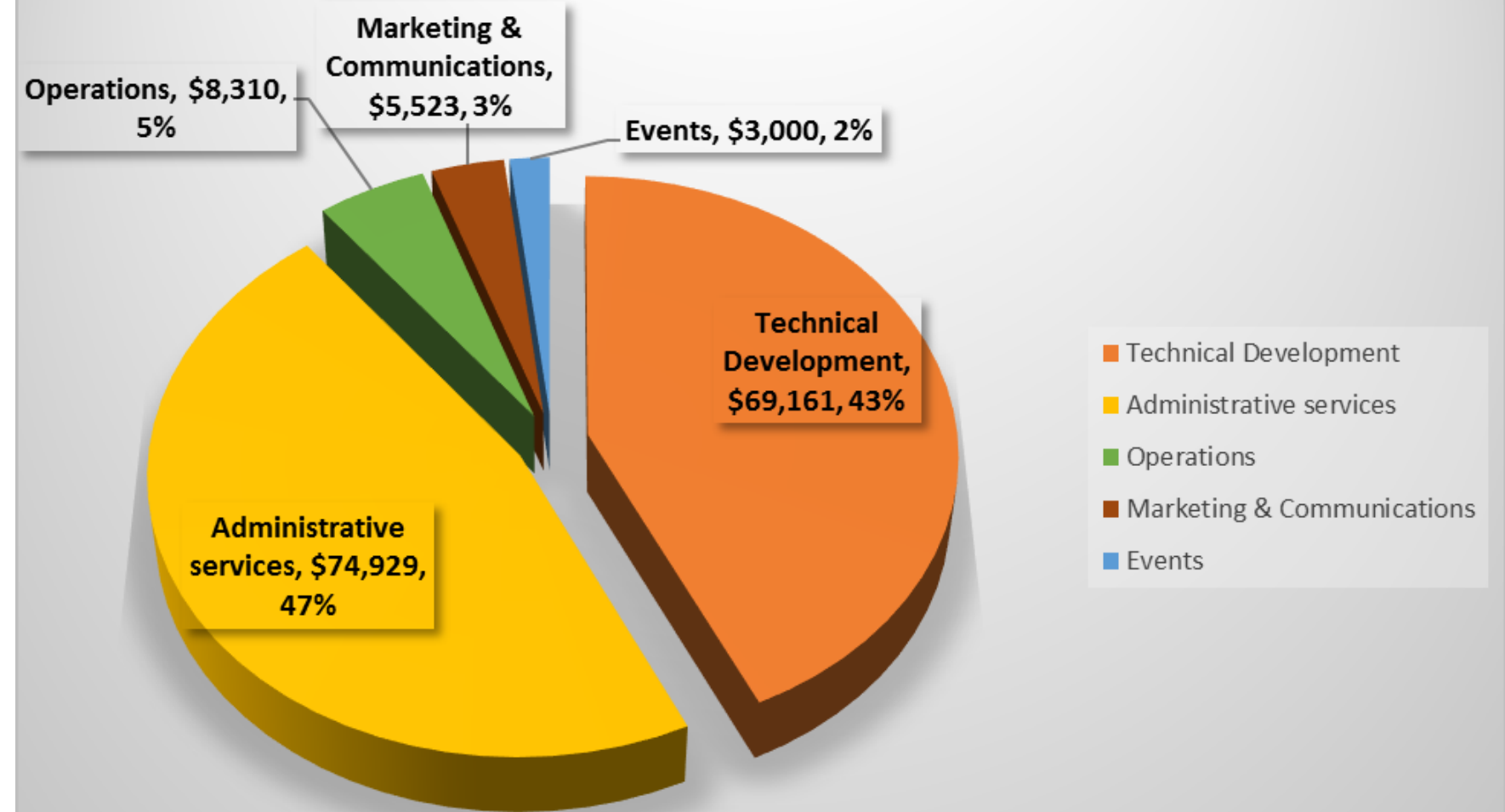


2017 Financials

2017 Projected Revenue \$100,403

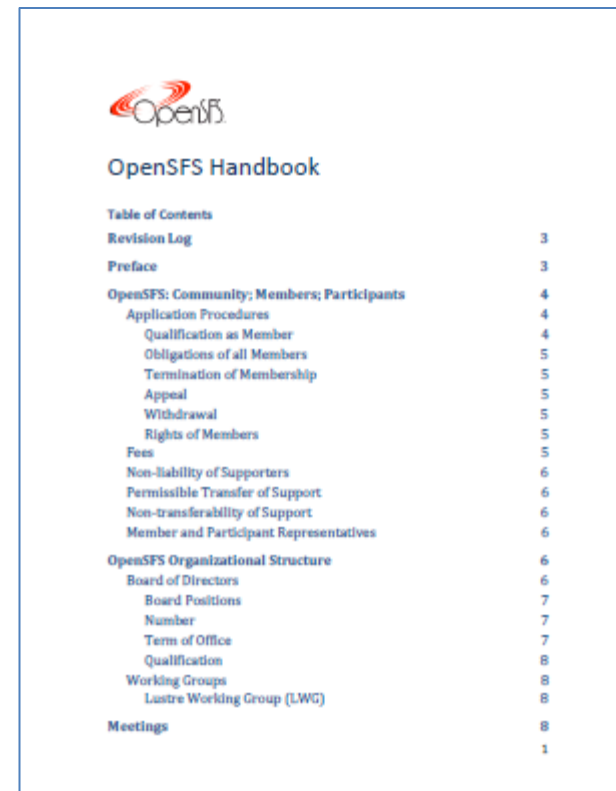


2017 Projected Expenses \$160,923



Other OpenSFS Items & Updates

- OpenSFS Handbook



The image shows the cover and table of contents for the OpenSFS Handbook. The cover features the OpenSFS logo and the title 'OpenSFS Handbook'. The table of contents lists various sections and their corresponding page numbers.

	
OpenSFS Handbook	
Table of Contents	
Revision Log	3
Preface	3
OpenSFS: Community; Members; Participants	4
Application Procedures	4
Qualification as Member	4
Obligations of all Members	5
Termination of Membership	5
Appeal	5
Withdrawal	5
Rights of Members	5
Fees	5
Non-liability of Supporters	6
Permissible Transfer of Support	6
Non-transferability of Support	6
Member and Participant Representatives	6
OpenSFS Organizational Structure	6
Board of Directors	6
Board Positions	7
Number	7
Term of Office	7
Qualification	8
Working Groups	8
Lustre Working Group (LWG)	8
Meetings	8
	1

- Ways to get involved

- LWG
- LUG Program Committee
- Nominating Committee

Requirements Gathering Process

- Objective
 - To present a unified voice for the Lustre community in shaping the Lustre roadmap
- Goal of the process
 - Collect, organize, and prioritize OpenSFS members' requests and requirements and present them to the OpenSFS Participants
- What is needed from members
 - To declare Lustre feature requirements and enhancements once a year
 - To vote on an organized, collective requirements list

Requirements Gathering Process (continued)

- How it works
 - <http://rt.opensfs.org/rt/>
 - A three stage process, organized by an OpenSFS Board agent
 - Stage 1
 - Declare your institute's Lustre “wish list”
 - Stage 2
 - Vote on an organized, collective Lustre “wish list”
 - Stage 3
 - Vendor feedback on the final Lustre “wish list” will be electronically communicated to OpenSFS members

Requirements Gathering Process (continued)

- Every Member site has a single username provided to the site delegate
 - Delegate will be responsible for
 - Requirements entry into the RT system on behalf of his/her institute
 - Voting on the organized, collective list on behalf of his/her institute
 - Disseminating the Participant feedback to his/her institute
- For all questions, please contact the OpenSFS Board or your site delegate
- Much thanks to Nathan Grodowitz for setting up the RT instance; Board members for their feedback

Interim Board Members – Thank You!



- Steve Simms, Indiana University (President)
- Sarp Oral, ORNL (Vice President)
- Steve Monk, Sandia National Lab (Treasurer)
- Rick Wagner, Globus (Secretary)
- Shawn Hall, BP (At Large Board Member)

Overview of Nomination & Election Process

- Nomination Committee
 - Mark Gary, Lawrence Livermore (Chair)
 - Dustin Leverman, Oak Ridge (Member)
 - Kent Blancett, BP (Member)
- Process
 - Solicited Interim Board for willingness to serve
 - Reached out to active people in Member organizations
- Nominees posted on OpenSFS website
 - <http://opensfs.org/about/board-election/>
- Electronic ballot distributed to Member Representatives

OpenSFS Board Nominees



President: Sarp Oral
ORNL



Vice President: Kevin Harms
Argonne Leadership Computing Facility



Secretary: Ken Rawlings
IU

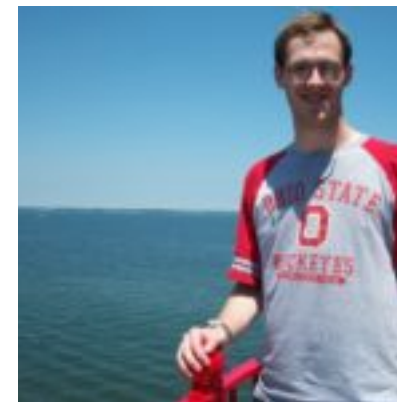


Treasurer: Rick Wagner
Globus

Director at Large



Stephane Thiell
Stanford



Shawn Hall
BP

New Board Members – Welcome!



President: Sarp Oral
ORNL



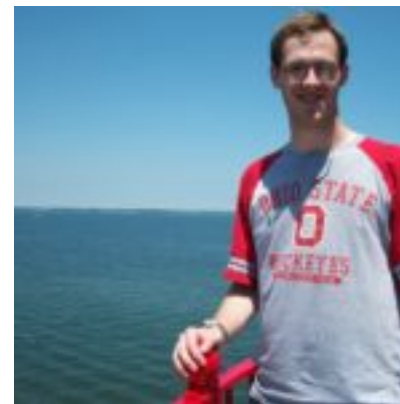
Vice President: Kevin Harms
Argonne Leadership Computing Facility



Secretary: Ken Rawlings
IU



Treasurer: Rick Wagner
Globus



Director at Large: Shawn Hall
BP



Open Scalable File Systems, Inc.
3855 SW 153rd Drive Beaverton, OR 97003
Ph: 503-619-0561 | Fax: 503-644-6708
admin@opensfs.org | www.opensfs.org