



An Essential Community Resource

HP-CAST 21
November 2013

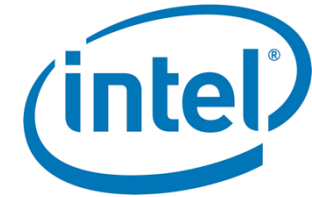
What Is OpenSFS?

Open Scalable File Systems

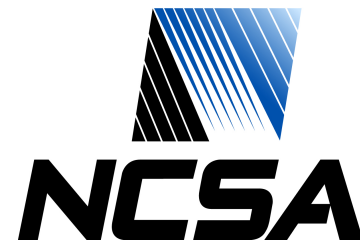
- The organizing force behind the Lustre® file system community
- We advance Lustre to meet evolving end-user requirements
- We enhance Lustre by funding collaborative development and community tools and resources
- We promote a strong vendor ecosystem to ensure stability and sustainability

Who Are We?

Promoters



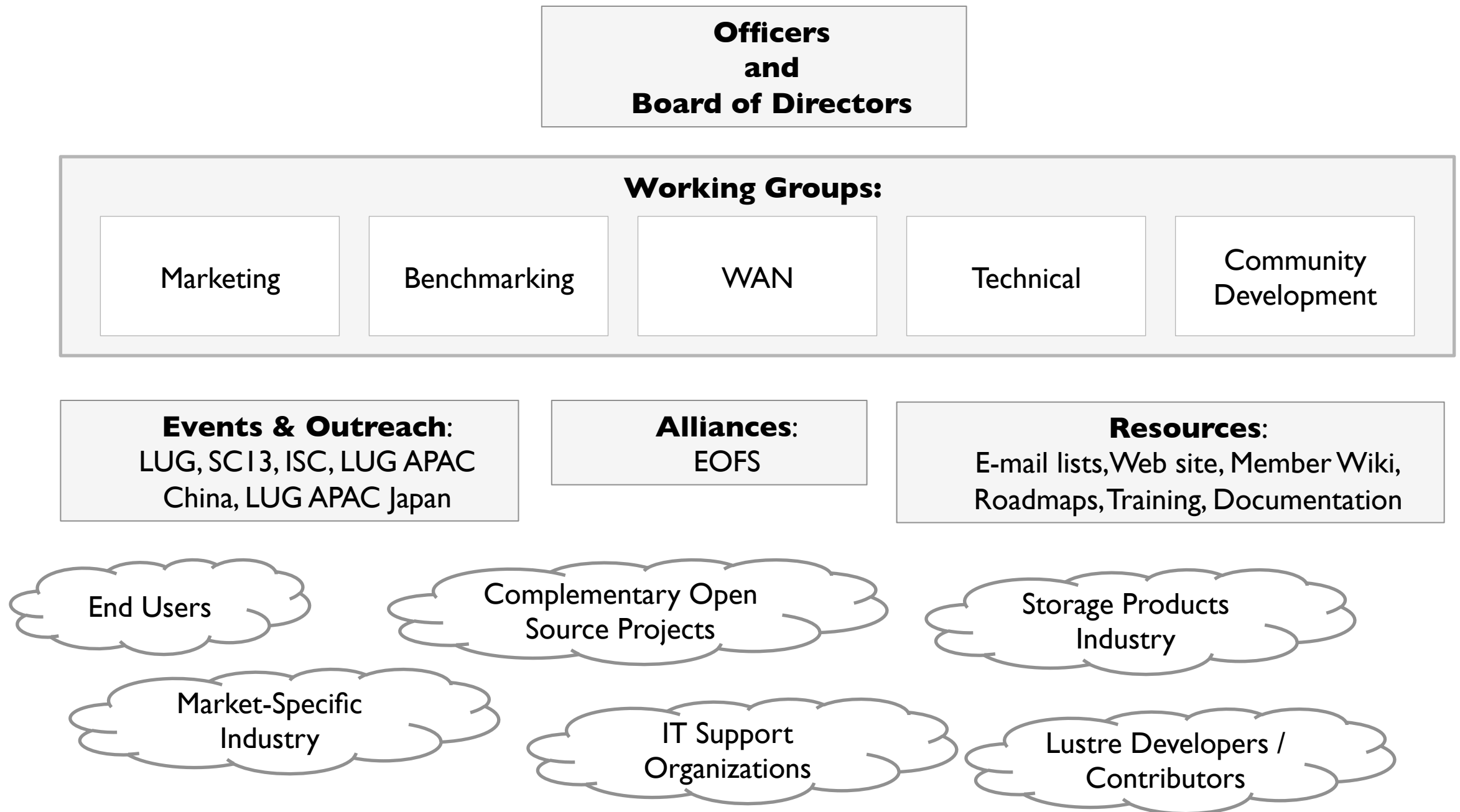
Adopters



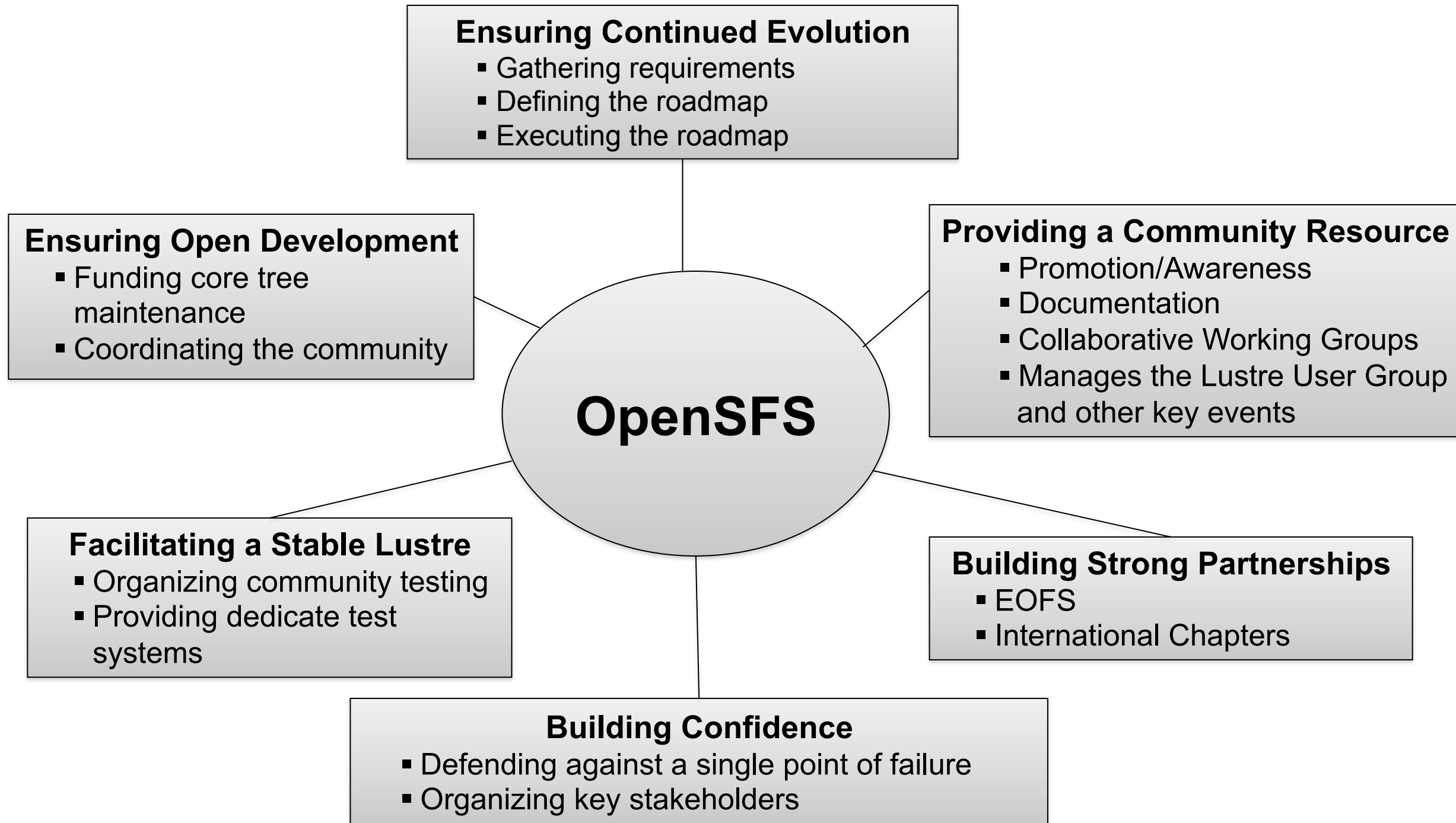
Supporters



How We Are Organized and Who We Serve



Providing Community Structure



What has OpenSFS done this year?

- Co-funded two major feature releases (2.4 & 2.5)
- Funded new Lustre development
- Hosted LUG 2013 in San Diego
- Hosted first APAC LUGs (China, Japan)
- Invested in a community portal

<http://lustre.opensfs.org>

Where the rubber meets the road

In 2012

- Lustre support and maintenance: \$1.5M
- Development programs, future feature definitions: \$800K
- Community support: \$125K

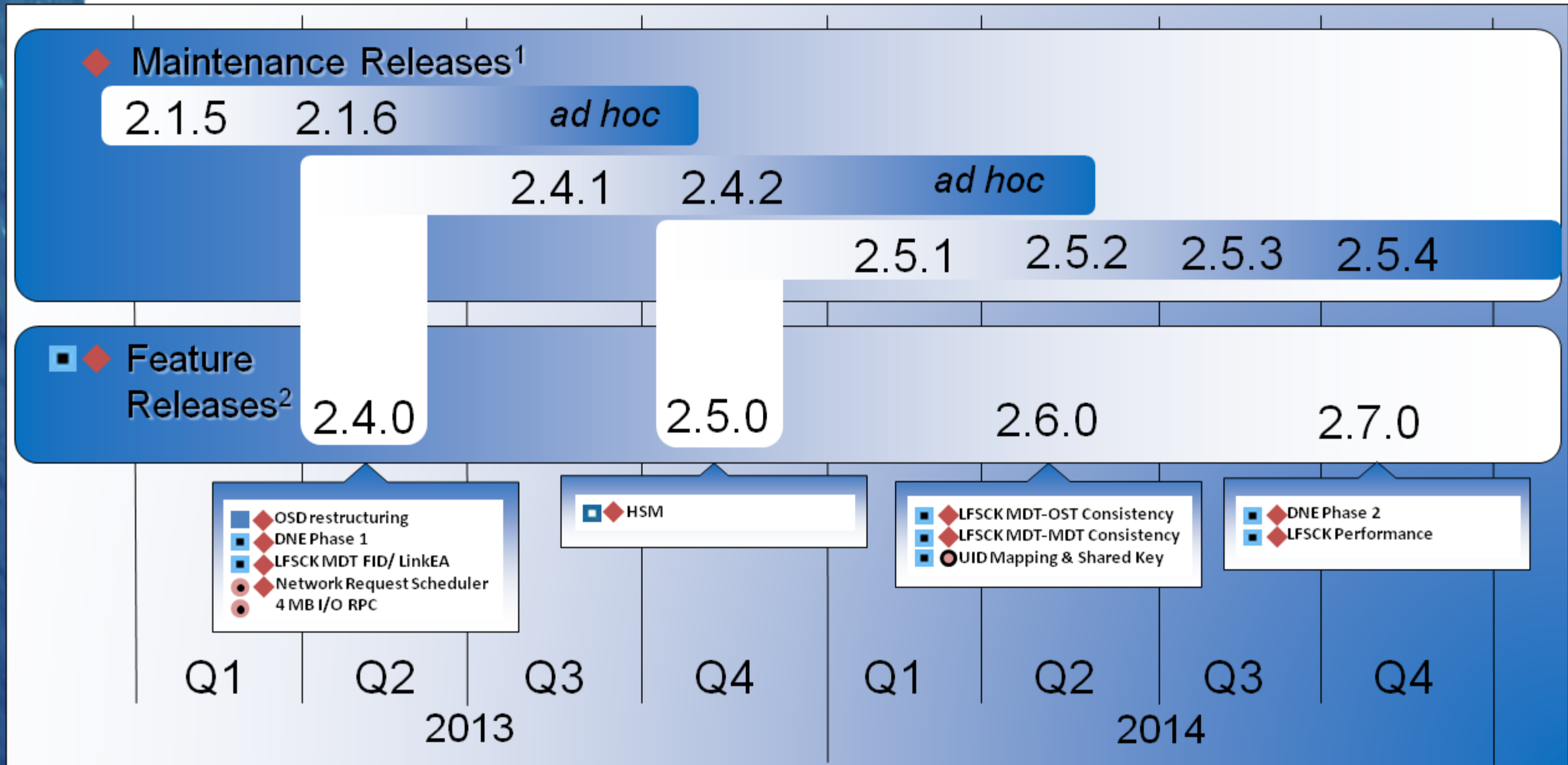
In 2013

- OpenSFS is on track to fund over \$3M in support of open source activities

Brought To You By OpenSFS

| Feature | Impact | Release |
|-------------------------------|-------------------------|---------|
| Server Stack SMP Scaling | Performance | 2.3 |
| Online check/scrub | Reliability | 2.3 |
| Distributed NamespacE (DNE 1) | Performance/Scalability | 2.4 |
| LFCK MDT FID/LinkEA | Usability/Reliability | 2.4 |
| FSCK MDT-OST Consistency | Usability/Reliability | 2.5 |
| DNE Phase 2 | Performance/Scalability | 2.7 |
| LFCK MDT-MDT Consistency | Usability/Reliability | 2.6 |
| UID Mapping & Shared Key | Usability | 2.6 |

Community Lustre Roadmap



Sponsors for Development and Releases: ● ORNL ■ OpenSFS ■ LLNL ◆ Intel
 ■ CEA ● Xyratex ● Indiana University

¹ Maintenance releases focus on bug fixes and stability. Updates to the current version are made at 3 month intervals. Updates to past versions will be made on an ad hoc basis.

² Feature releases focus on introducing new features. New release versions are expected at 6 month intervals. New maintenance versions from the feature release stream are anticipated at 18 month intervals.



New Initiative for 2014



- Fostering broader participation in Lustre community releases
 - Gatekeeping, release management, development, testing
- Laying the groundwork to transition to a volunteer community model
- Leveraging our strong vendor commitment and partnership with EOFS members to make this happen

Fostering a strong and diverse ecosystem
of open source development

Get Involved!

- Encourage your organization to join OpenSFS
- Actively participate in an OpenSFS working group
- Contribute to the Lustre file system (contribute documentation; testing, testing, and more testing; bug fixes, features)

Help shape the future of Lustre!

OpenSFS at SC13

Booth #4125

- **Conference Events**

<http://www.opensfs.org/events/sc13>

- **Lustre BOF**

Tuesday, November 19th,

12:15pm to 1:15pm

Rooms 405/406/407

Thank you!

